



Important COVID-19 Procedures



STARTING TUESDAY, 1ST FEBRUARY, 2022



- Parents are not allowed **onsite** at **drop off** or **pick up** times.
- Procedures will be different for **Kinder students** due to **Best Start**.

AT DROP OFF – (8:30 – 9:05am)

- Gates will be **closed** until **8:25am** (Please drop off students as close to 8:55am as possible)
- In the morning please drop your children outside the front gate **OR** back gate.
- Students will go straight to their classroom to keep cohorts separate.

AT PICK UP – (starting at 2:40pm) Back gate will be open

- **Kinder parents to be advised of pick up procedures in Weeks 1 and 2.**
- **2:40pm – Unit** – Dismissal from car park
- **2:45pm – Year 3-6 & Siblings** – Leave school grounds (**NO** after school care)
- **2:55pm – Years 1 & 2 & Siblings** – assemble in the concrete area near the electronic sign for dismissal.
- **2:55pm - After school Care/Bus** – Leave on own
- Buses operating – however parents are encouraged to drive students to school where possible.



LUNCH & RECESS BREAKS

Lunch

- K-2 10:30am Playtime 11:00am eating in classrooms for 10 minutes.
- Years 3-6 10:55am eating in classrooms for 10 minutes 11:05am Playtime.
- **Support Unit** to integrate with appropriate Stage cohorts.

Recess

- K - 2 1:00pm Playtime 1:20pm eating in classrooms for 10 minutes.
- Years 3-6 1:25pm outside.
- **Support Unit** to integrate with appropriate Stage cohorts.

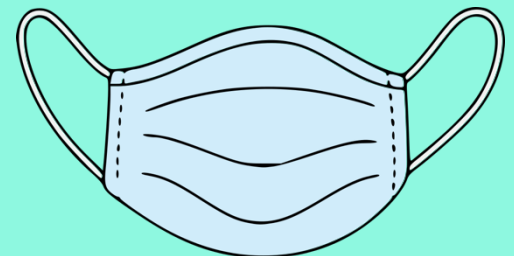
Play Areas

- K-2 Switch between grass/infants cola and primary cola areas.
- Years 3-6 Switch between grass/infants cola and primary cola areas.



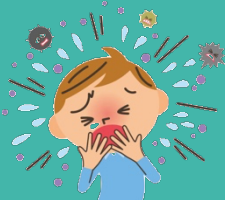
HYGIENE - ALL STAFF ON SITE ARE FULLY VACCINATED

- Staff will wear approved masks at all times indoors.
- Students (K-6) are strongly encouraged to wear masks indoors.
- Approved masks will be supplied to students who request one.
- Ensure washing of hands and sanitising.
- Toilets will be assigned to cohorts.
- Windows and doors will be open at all times.
- Outdoor learning will occur where possible.



IF SICK... Coughing, sneezing or any cold and flu like symptoms

- **PLEASE** keep your child at home.
- **Children with these symptoms will be sent home. This will help keep the school open and everyone safe.**
- **RAHT tests are acceptable** and the school **MUST be notified** immediately if a student or family member displays a positive result.





Important COVID-19 Procedures Part 2



STARTING TUESDAY, 1ST FEBRUARY, 2022

ATTENDANCE

- All students are expected to attend school from 1st February, 2022.
- Kinder students will be contacted with their procedures.
- Parents are to supply a medical explanation if students are not going to attend school.
- There will be **no dual modes** of learning.
- **Home learning** will only occur in the unlikely event that the school is closed.



COVID Reporting



- Classes and cohorts will be advised if there are positive cases in the classroom.
- If a student receives a positive COVID test, that student along with their **WHOLE** family (including siblings) are required to isolate for 7 days.
- Parents may go to the Department of Education website for home learning packs.

Celebrations

- At this present time these will not occur in their usual format.
- Assemblies will be restricted to cohorts and not whole school.
- Unfortunately parents will not be able to attend at this stage.



SPORT



- All outside school sporting events will be risk assessed before proceeding.
- School sport will be arranged in cohorts with each cohort using 'cohort sport equipment'.

LINING UP & AWARDS

- No lining up – students to go straight to class.
- Merit Awards – students to hand in to class teacher.
- White Awards will be given at cohort/stage assemblies.



CANTEEN

Canteen will be in operation from 1st February, 2022
At this stage parents will not be allowed onsite to order so **ordering online** is strongly encouraged.